

LUPIN LTD.

DATE- 24 JULY 2024

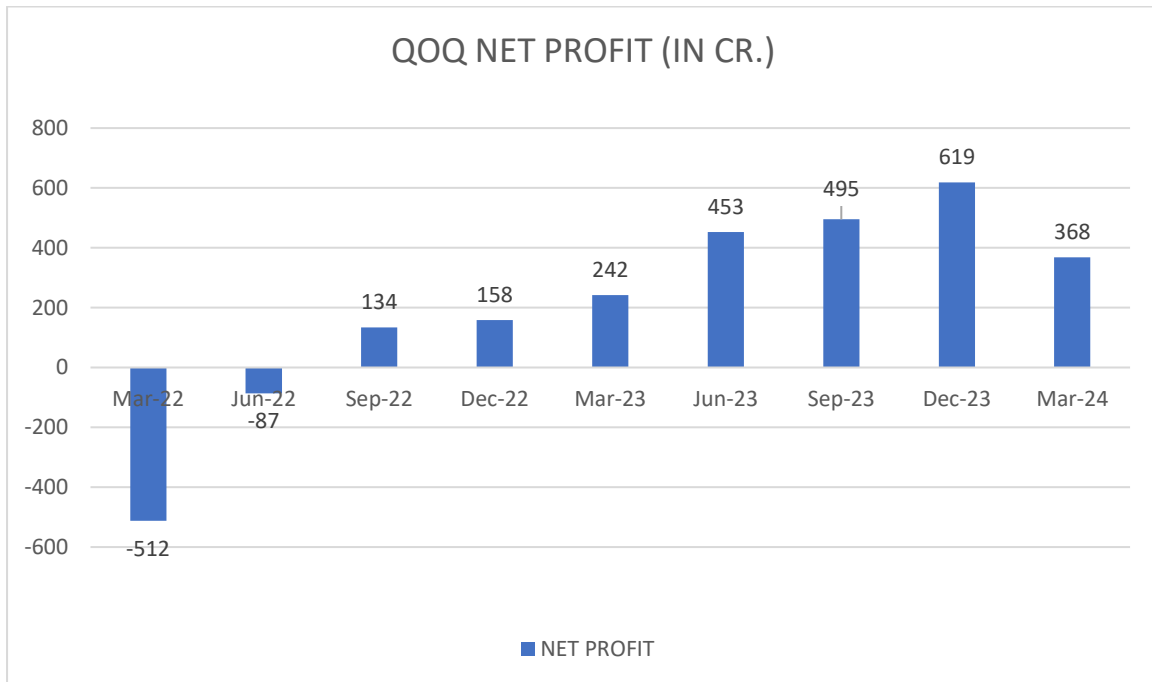
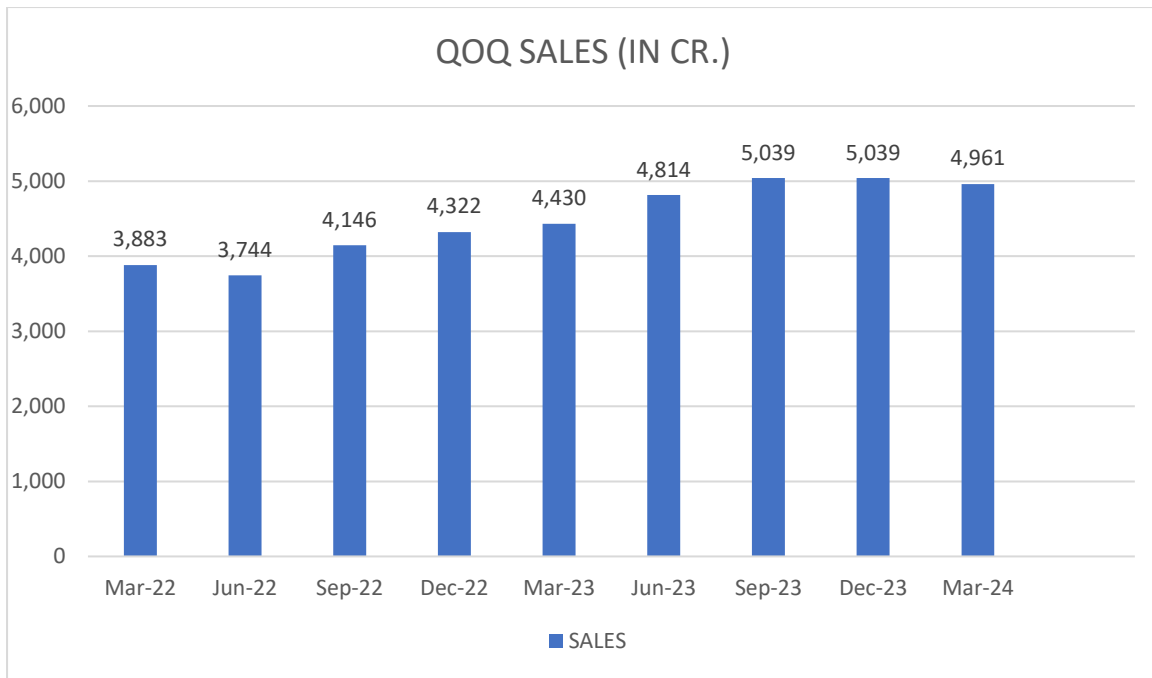
About Company

Lupin, headquartered in Mumbai, is an innovation-driven global pharmaceutical company. It develops and markets a diverse array of branded and generic formulations, biotechnology products, and APIs. Operating in over 100 markets, Lupin has a strong presence in the U.S., India, South Africa, the Asia Pacific (APAC), Latin America (LATAM), Europe, and the Middle East.

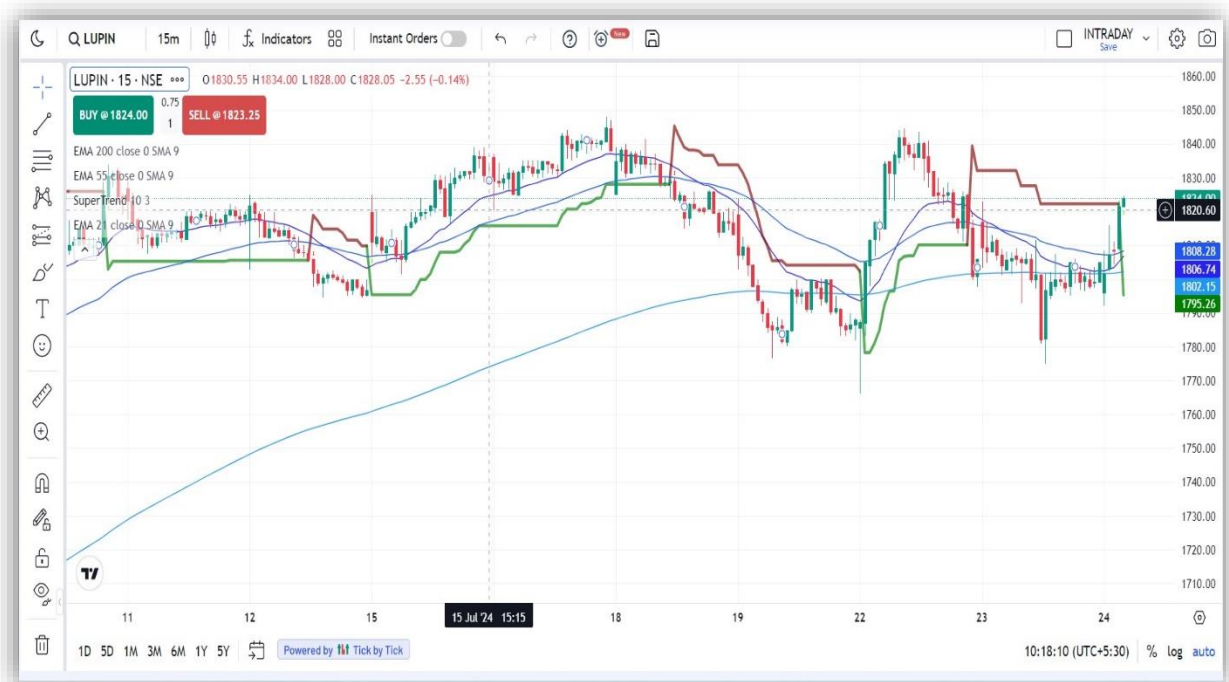
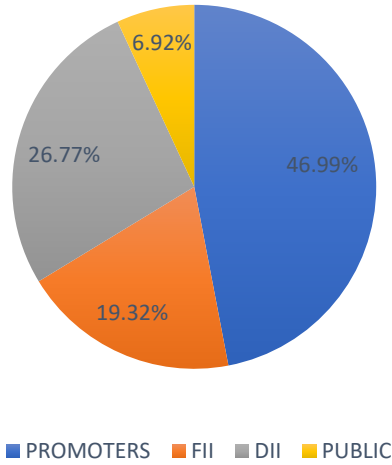
OUR RECOMMENDATION:

OPTION INSIGHT: BUY LUPIN 1840 CALL BETWEEN 61-63 TARGETS 70-79 STOP LOSS BELOW 53.

MARKET CAP	P/E	DIVIDEND YIELD	ROCE	ROE	FACE VALUE	3YEARS SALES GROWTH	3YEARS PROFIT GROWTH
RS.82,973 CR.	43.9	0.44 %	15.7 %	14.1 %	2.00	10%	17%



SHAREHOLDING PATTERN MARCH 24



TECHNICAL ANALYSIS

After trading in consolidation range, the stock is trading around the 200 EMA (Exponential Moving Average), 55 EMA, and 21 EMA, indicating its present trend and momentum, with

the 200 EMA acting as a support level around 1806.74. The stock has given break out of supertrend resistance at the levels of 1822 on 15 min chart. The rising volume in daily chart and bullish candle indicated an upward momentum. On the basis of above information, we gave a buy signal in Lupin 1840 Call option.

DISCLAIMER

I, **Ruchi Nahar**, SEBI Registered Research Analyst (**INH000014544**) comply with the qualification and certification requirements under SEBI (Research Analyst) Regulations, 2014. I have qualified **CA, CS and MBA**, has over 11 years of experience in MNCs, culminating as Head of Finance. I now leverages my expertise to guide stock market investors with strategic insights. All of the views expressed in research reports and recommendations issued by me reflect my personal views about the subject company or companies at the given point of time and I do not receive/accept any kind of compensation, directly or indirectly related to specific recommendations or views expressed in reports issued by me. I/my relatives do not at any point of time of issuing the reports have any material conflict of interest in the subject company neither I was/am/will be engaged in market making activity for the subject company. The investments discussed or views expressed in reports and recommendations issued by me may not be suitable for all investors. The user assumes the entire risk of any use made of this information. I nor any person connected with my report, accepts any liability arising from the use of research document. The recipients of research document should rely on their own investigations and should consult their own financial advisors to determine merit and risks of such investments based on their own risk appetite. Price and value of the investments referred to in this material may go up or down. Past performance is not a guide for future performance. Certain transactions including those involving futures, options and other derivatives as well as non-investment grade securities involve substantial risk and are not suitable for all investors. Reports and recommendations based on technical analysis centres on studying charts of a stock's price movement and trading volume, as opposed to focusing on a company's fundamentals and as such, may not match with a report on a company's fundamentals. Opinions expressed in research reports & recommendations will be based on the current opinions as of the date appearing in research report & recommendations. While I endeavour to update on a reasonable basis the information discussed in research reports, there may be regulatory, compliance, or other reasons that prevent me from doing so. Prospective investors and others are cautioned that any forward-looking statements are not predictions and may be subject to change without notice. So far as reports include current or historic information, it is believed to be reliable, although its accuracy and completeness cannot be guaranteed. Investment in securities market is subject to market risks. Read all the related documents carefully before investing. Registration granted by SEBI, and certification from NISM in no way guarantee performance of the intermediary or provide any assurance of returns to investors.