

SENSEX

08 November, 2024

About Index

The BSE SENSEX is India's most tracked bellwether index. It is designed to measure the performance of the 30 largest, most liquid and financially sound companies across key sectors of the Indian economy that are listed at BSE Ltd. It was launched on 1st January 1986. It can be used for variety of purposes such as benchmarking fund portfolios, launching of Index funds, ETF and structured products and also for research purposes

Portfolio Characteristics

METHODOLOGY	Float -adjusted market cap weighted
LAUNCH DATE	1 JANUARY , 1986
FIRST VALUE DATE	3 APRIL, 1979
CALCULATION CURRENCIES	INR, USD
CALCULATION FREQUENCY	REAL TIME
INDEX REBALANCING	SEMI- ANNUALLY

Top constituents by weightage:

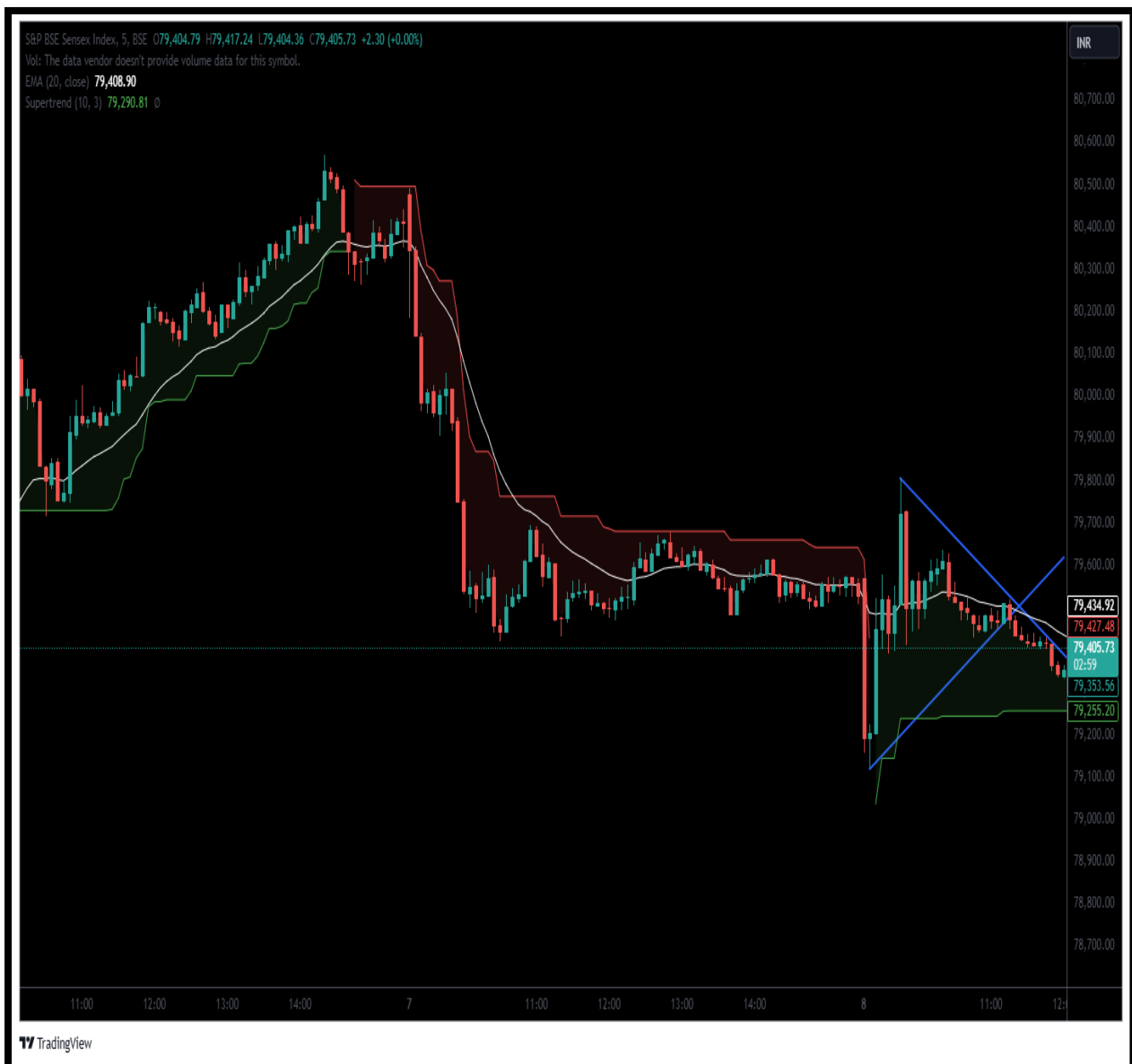
HDFC BANK LTD	FINANCIAL SERVICES
RELIANCE INDUSTRIES LTD	ENERGY
ICICI BANK LTD	FINANCIAL SERVICES
INFOSYS LTD	IT
LARSEN & TOUBRO LTD	INDUSTRIAL
TCS LTD	IT
ITC LTD	FAST MOVING CONSUMER GOODS
BHARTI AIRTEL LTD	TELECOMMUNICATION
AXIS BANK LTD	FINANCIAL SERVICES
STATE BANK OF INDIA	FINANCIAL SERVICES

Our recommendation

OPTIONS INSIGHT: BUY SENSEX 79500 PUT ABOVE 150 TARGET 200/250 SL BELOW 80

Technical analysis

The BSE Sensex Index prices are trading below its previous support level of 71400. The prices gave a trend line break out for the down side. The prices are trading below its 20 EMA levels, indicating bearish trend. However, Supertrend indicator is not that much supportive, but we take majority of confirmation. Hence we recommended to buy SENSEX 79500 put option.



Disclaimer

I, Ruchi Nahar, SEBI Registered Research Analyst (INH000014544) comply with the qualification and certification requirements under SEBI (Research Analyst) Regulations, 2014. I have qualified CA, CS and MBA, has over 11 years of experience in MNCs, culminating as Head of Finance. I now leverage my expertise to guide stock market investors with strategic insights. All of the views expressed in research reports and recommendations issued by me reflect my personal views about the subject company or companies at the given point of time and I do not receive/accept any kind of compensation, directly or indirectly related to specific recommendations or views expressed in reports issued by me. I/my relatives do not at any point of time of issuing the reports have any material conflict of interest in the subject company neither I was/am/will be engaged in market making activity for the subject company. The investments discussed or views expressed in reports and recommendations issued by me may not be suitable for all investors. The user assumes the entire risk of any use made of this information. I nor any person connected with my report, accepts any liability arising from the use of research document. The recipients of research document should rely on their own investigations and should consult their own financial advisors to determine merit and risks of such investments based on their own risk appetite. Price and value of the investments referred to in this material may go up or down. Past performance is not a guide for future performance. Certain transactions including those involving futures, options and other derivatives as well as non-investment grade securities involve substantial risk and are not suitable for all investors. Reports and recommendations based on technical analysis centres on studying charts of a stock's price movement and trading volume, as opposed to focusing on a company's fundamentals and as such, may not match with a report on a company's fundamentals. Opinions expressed in research reports & recommendations will be based on the current opinions as of the date appearing in research report & recommendations. While I endeavour to update on a reasonable basis the information discussed in research reports, there may be regulatory, compliance, or other reasons that prevent me from doing so. Prospective investors and others are cautioned that any forward-looking statements are not predictions and may be subject to change without notice. So far as reports include current or historic information, it is believed to be reliable, although its accuracy and completeness cannot be guaranteed. Investment in securities market is subject to market risks. Read all the related documents carefully before investing. Registration granted by SEBI, and certification from NISM in no way guarantee performance of the intermediary or provide any assurance of returns to investors.